

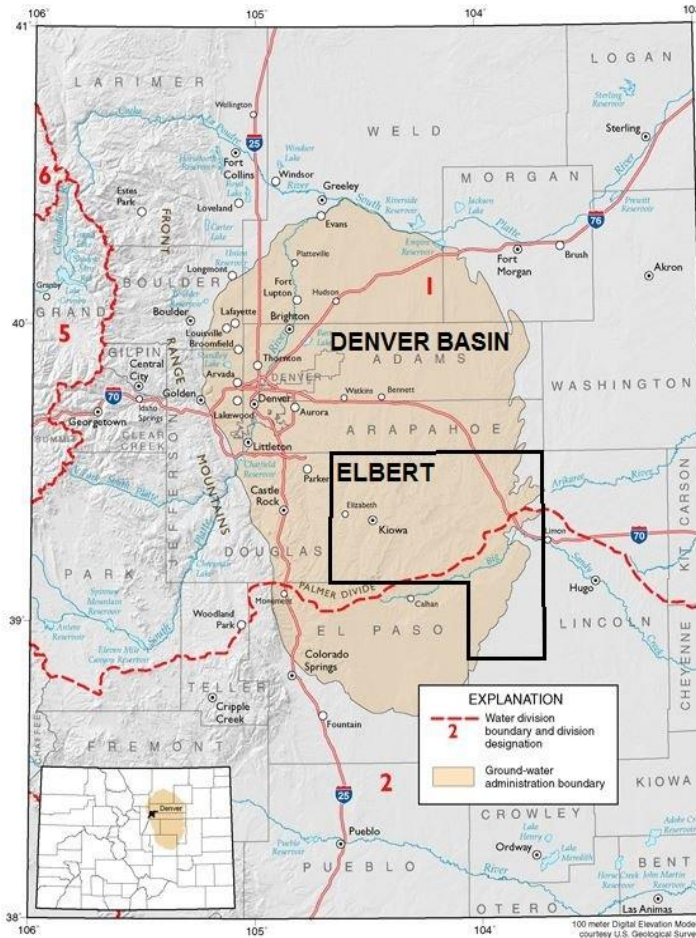
ELBERT COUNTY GRANT PROPOSAL - WATER RESOURCES STUDY

In the last few decades, declining groundwater levels in the Denver Basin aquifers in nearby Front Range counties have been documented at significant rates. That trend is expected to continue, and is further supported in current studies by the United States Geological Survey (USGS) and Colorado Division of Water Resources (CDWR).

Even so, we don't know what this trend of declining water tables in nearby counties means for the deep groundwater aquifers in Elbert County.

In order to better understand the status of the deep groundwater aquifers in Elbert County, an effort is underway to actively seek out state grant monies for a detailed study focused on the status of the Denver Basin deep groundwater aquifers in our area.

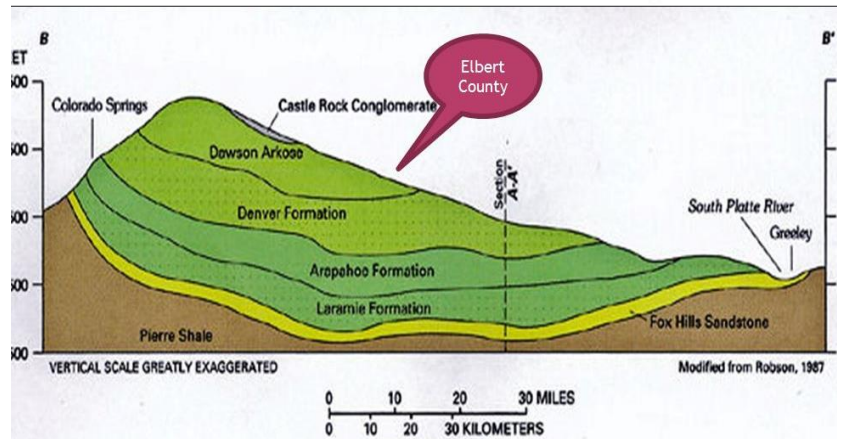
This study would carefully examine water levels in wells across Elbert County on an all-voluntary basis. The objective is to find out whether the declining water levels seen in nearby counties are also occurring to these same aquifers in Elbert County. Is there is a similar trend here? If so, what is the timeline?



To find the answers, a proposal was presented to the Elbert County BOCC to seek state grant monies to accomplish two goals: First, to establish an all-voluntary well monitoring network together with the USGS & CDWR, in which well water levels would be sampled annually for three years, called the Elbert County Well Monitoring Network. Second, to conduct a water supply study to analyze the well monitoring data and assess the status of the Denver Basin deep groundwater aquifers in Elbert County.

A grant proposal seeking a total of \$377,000, including \$82,600 in federal funding from USGS, and \$284,400 of state monies, together with \$10,000 matching funds from Elbert County, aims to establish a all-voluntary well monitoring network for a three-year period, and to complete the Elbert County Water Supply Study assessing the status of the Denver Basin deep groundwater aquifers in our area.

Geological Cross Section of Denver Basin in Relation to Elbert County



Getting the grant funding has a long way to go, and public involvement & support is essential. As we move through the lengthy grant application process, all interested parties are encouraged to come to the monthly Water Advisory Committee meetings for updates on the continuing efforts to secure funding for this important water resources study.

All monthly meetings of the Water Advisory Committee are open to the public at 7:00 PM on the first Wednesday of every month at the Elizabeth Public Library.

For more information, please contact the Water Advisory Committee at: elcowac@gmail.com



Irrigated hay fields along Kiowa Creek - 25 Jun 14